

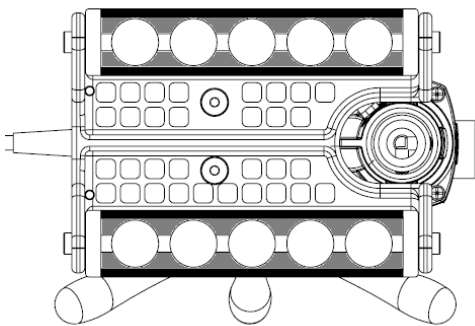


Magswitch Technology, Inc.
 1355 Horizon Ave.
 Lafayette, CO 80026
 Magswitch.com.au
 303-468-0662

Magswitch MagDrill Disruptor 30 P/N: 8100920

By combining Magswitch's patent-pending rotating magnet technology and Euroboor's lightest unit yet, we have created a tool that is capable of quickly and safely drilling on contoured and flat surfaces. Magswitch LAY allow for a much more efficient field on thin material, allowing more consistent tip forces up to full saturation.

WARNING!
**Do Not Operate Unless In
 Contact With Ferrous Target**



WORKING SURFACE
BLACK=BEST
GRAY=MODERATE

SPECIFICATIONS	
P/N: 8100920 – Magswitch MagDrill Disruptor 30	
Magnetic Force(Full Sat)	1169 lbs./532 kg*
Magnet Assembly(L x W x H)	187mm x 165mm x 83mm 7.36" x 6.49" x 3.27"
Full Saturation Thickness	1/2" / 12.7mm
Max Tip Force (Full Saturation)	609 lbs./276kg**
Smallest Pipe Diameter	3.5"/80mm
Motor Power	8.2 A
Speed (No Load)	775 RPM
Speed (Load 900 W)	400 RPM
Voltage	110-120 V, 50-60 Hz
Drill Stroke	3.5"/90mm
Spindle	3/4" Weldon
Annular Cutters	Ø 1/2"-1 3/16" Ø 12-30 mm
Twist Drill	Ø 1/16"-1/2" Ø 1-13 mm
Overall Height	16.38"/416 mm
Overall Length	10.83"/275 mm
Overall Width	7.28"/185 mm
Net Weight	24.2 lbs. /11 kg

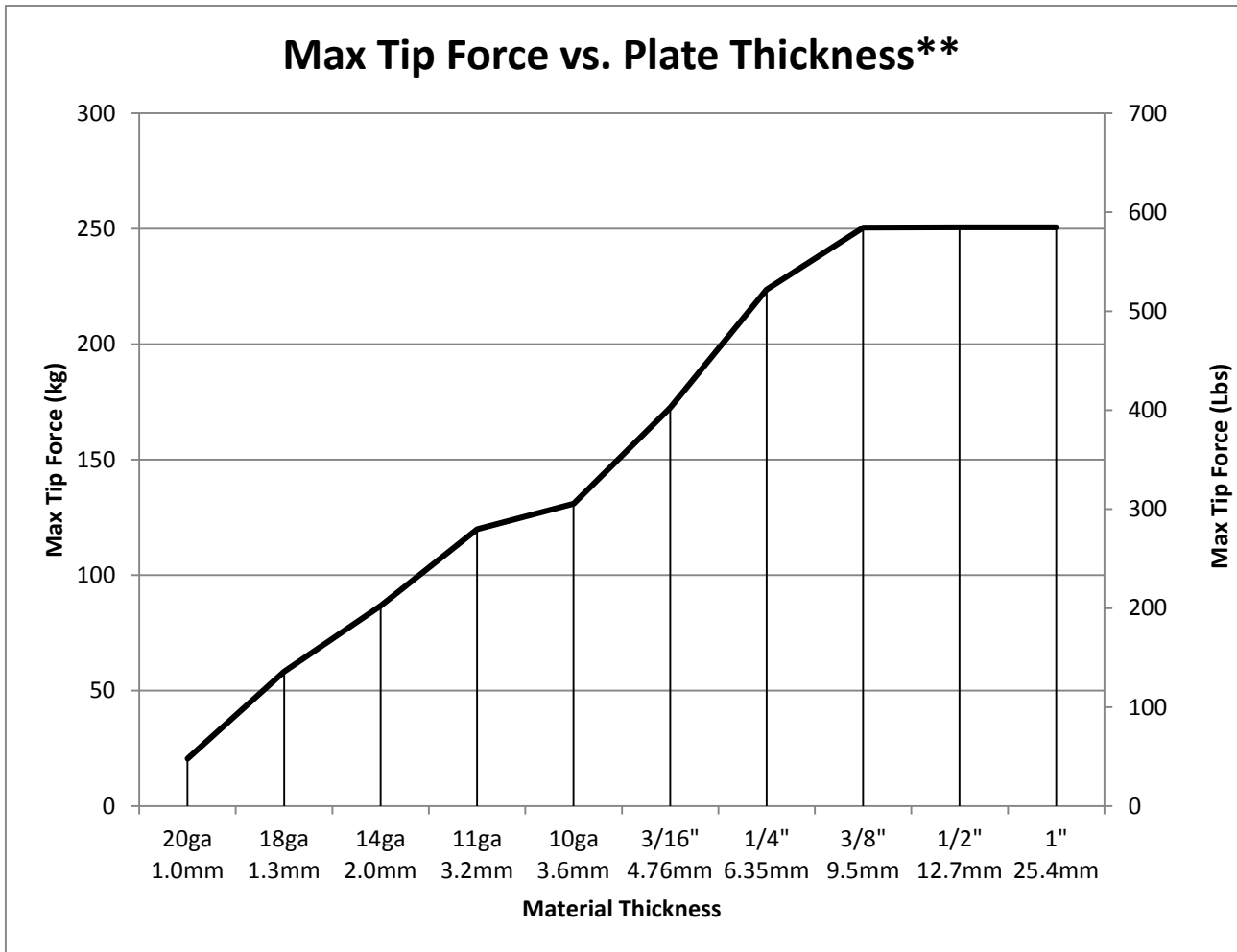
* Max Breakaway determined in laboratory environment on 2" thick SAE1018 Steel with surface roughness 63 micro inches. Many factors contribute to the actual breakaway force in each application. Always test the magswitch in each application before deployment. Refer to the magswitch information booklet for more information.

** Tip force measured on flat surface

Part Number 1101168
 Revision Date: NOV 2, 2015



Max Tip Force vs. Plate Thickness**



* Max Breakaway determined in laboratory environment on 2" thick SAE1018 Steel with surface roughness 63 micro inches. Many factors contribute to the actual breakaway force in each application. Always test the magswitch in each application before deployment. Refer to the magswitch information booklet for more information.

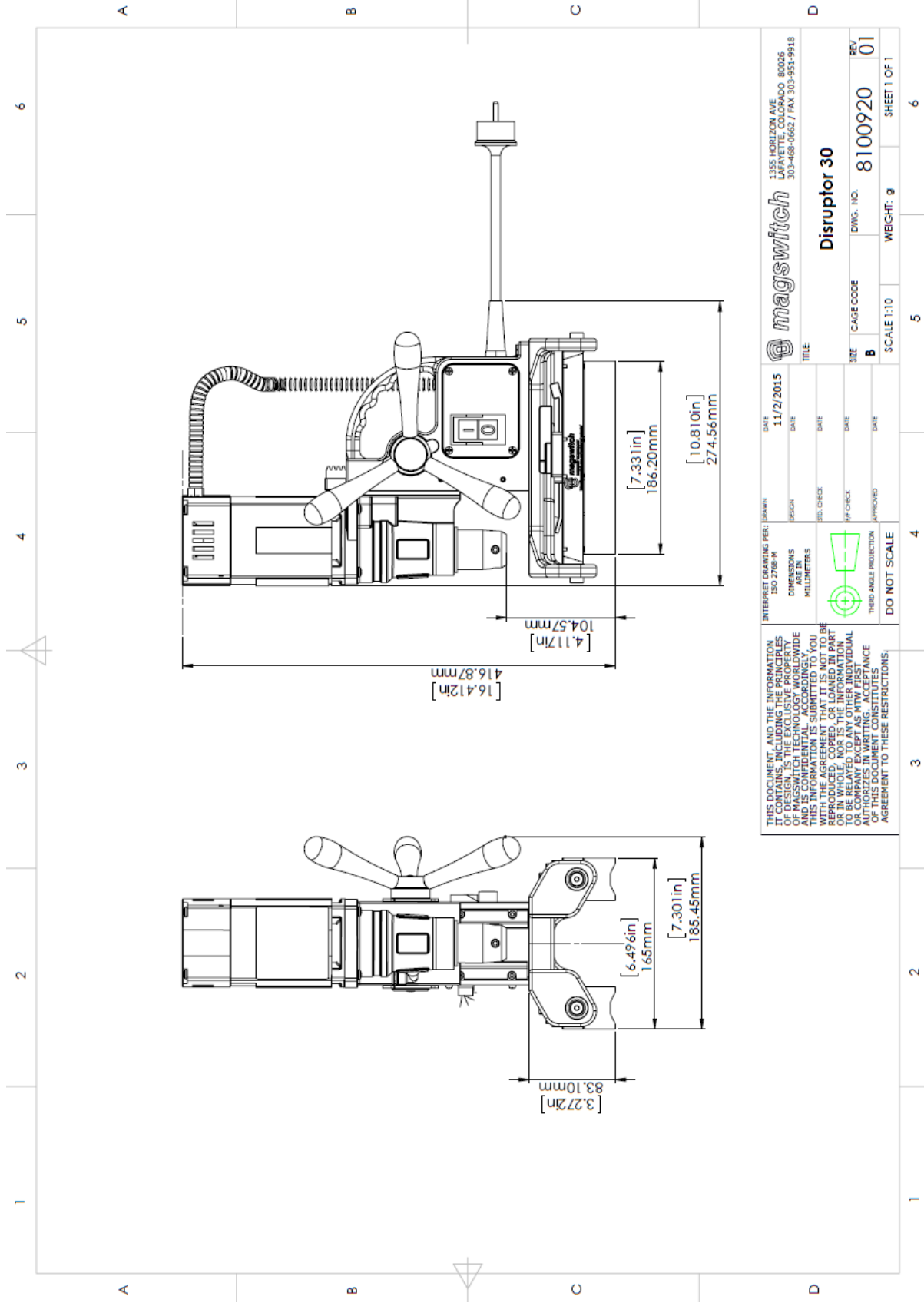
** Tip force measured on flat surface



Part Number 1101168
Revision Date: NOV 2, 2015



Part Number 1101168
 Revision Date: NOV 2, 2015



<p>THIS DOCUMENT, AND THE INFORMATION IT CONTAINS, INCLUDING THE PRINCIPLES OF MAGSWITCH TECHNOLOGY, IS CONFIDENTIAL AND IS CONFIDENTIAL ACCORDINGLY. THIS INFORMATION IS SUBMITTED TO YOU BY Magswitch, INC. AND SHALL NOT BE REPRODUCED, COPIED, OR LOANED IN PART OR IN WHOLE, NOR IS THE INFORMATION TO BE USED FOR THE BENEFIT OF ANY INDIVIDUAL OR COMPANY EXCEPT AS WITH FIRST AUTHORIZATION IN WRITING. ACCEPTANCE OF THIS DOCUMENT CONSTITUTES AGREEMENT TO THESE RESTRICTIONS.</p>		<p>DATE: 11/2/2015</p>
<p>INTERPRET DRAWING PER: DRAWN: 250 2786 PA</p>	<p>DESIGN: DATE:</p>	<p>DATE: 11/2/2015</p>
<p>DIMENSIONS: MILLIMETERS</p>	<p>DESIGN CHECK: DATE:</p>	<p>DATE: 11/2/2015</p>
<p>THIRD ANGLE PROJECTION</p>	<p>APPROVED: DATE:</p>	<p>DATE: 11/2/2015</p>
<p>DO NOT SCALE</p>	<p>SCALE: 1:10</p>	<p>WEIGHT: g</p>
<p>1</p>	<p>2</p>	<p>3</p>
<p>4</p>	<p>5</p>	<p>6</p>

magswitch 1355 HORIZON AVE
 LAFAYETTE, COLORADO 80026
 303-468-0662 / FAX 303-951-9918

Disruptor 30

DWG. NO. 8100920 REV. 01

CAGE CODE

SCALE 1:10 WEIGHT: g SHEET 1 OF 1