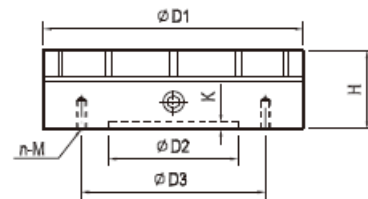


## CIRCULAR PERMANENT MAGNETIC CHUCK WITH RADIAL POLES – MPR-NR



Dimensions (mm)										
Part Number	D1	H	D2	D3	n	M	K	Ø ixP	No. Of poles	Weight Kg
2002/01/130NR	130	60	50	100	4	M6	4		10	6,0
2002/01/150NR	150	60	90	115	4	M8	4	16X20	10	8
2002/01/160NR	160	60	120	140	4	M8	4	16X20	12	10
2002/01/200NR	200	60	160	180	4	M8	4	16X20	12	14
2002/01/250NR	250	60	200	235	4	M10	4	16X20	12	23
2002/01/300NR	300	80	250	270	7	M12	4	25X20	14	43
2002/01/350NR	350	80	250	280	6	M12	4	25X20	16	59
2002/01/400NR	400	80	200	260/340	12	M10	6	25X20	20	78
2002/01/500NR	500	95	200	300/400	12	M10	8	25X20	24	146
2002/01/600NR	600	95	250	350/450	12	M10	8	25X20	30	210

Use : Turning and grinding of ring-shaped workpieces.

Features :

- Radial pole configuration concentrates the entire magnetism of the chuck into the workpiece.
- Concentric grooves for easy centering.
- Adjustable magnetic clamping force with removable Allen key.
- Symmetrical design allowing high turning speeds.
- Ø ixP shows max allowable drilling dimensions of centering hole.
- Clamping force up to 140 N/cm<sup>2</sup>