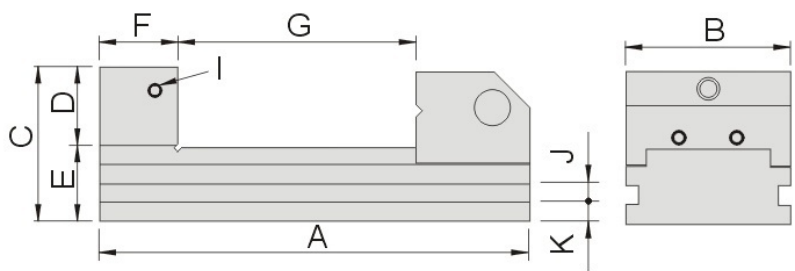


PRECISION TOOLMAKER VISE – EPR



Dimensions (mm)											Weight Kg
Part Number	A	B	C	D	E	F	G	I	J	K	
1002/01/36	105	36	48	20	28	25	0-40	M6	7	9	0,8
1002/01/48	150	48	53	25	28	25	0-75	M6	6	8,5	2,0
1002/01/63	176	63	59	30	29	30	0-95	M6	8	7,5	3,3
1002/01/73	190	73	68	35	33	35	0-105	M6	8	9	4,3
1002/01/98	245	98	90	45	45	45	0-135	M6	10	14	10

Specifications :

- Screwless precision vise
- Material : hardened tool steel
- Hardness : 55-60 HRC.
- Paralelism : 0.003/100 mm
- Squareness : 0.005/100 mm