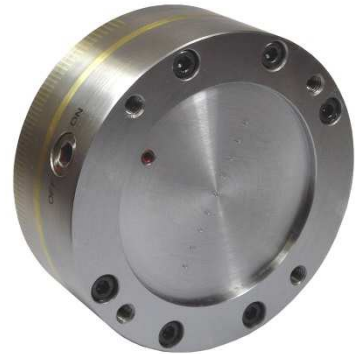
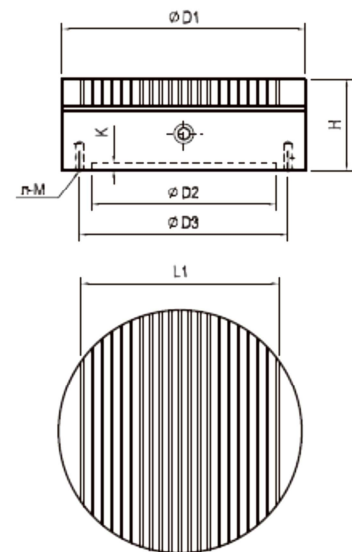


CIRCULAR PERMANENT MAGNETIC CHUCK WITH MICROPITCH POLES - MPP- FP



Dimensions en mm									
Référence	D1	D2	D3	H	K	L1	M	n	Poids en kg
2002/05/60	60			50		46			1
2002/05/100	100	60	85	50	4	76	8	4	3
2002/05/130	130	90	115	50	4	100	8	4	5
2002/05/150	150	110	132	50	4	117	8	4	7
2002/05/160	160	120	140	52	4	129	10	4	8
2002/05/200	200	160	180	52	4	169	10	4	12
2002/05/250	250	200	230	52	4	213	10	4	19
2002/05/300	300	250	280	54	4	265	10	4	28
2002/05/400	400	320	360	58	6	360	12	4	57
2002/05/600	600	500	540	62	6	553	12	5	137



Other dimensions on request.

Use : Grinding, EDM of small and thin workpieces.

Features :

- Pole pitch : 2 m : 1.5 mm steel + 0.5 mm brass
- Low height and light weight
- Clamping force up to 120 N/cm²