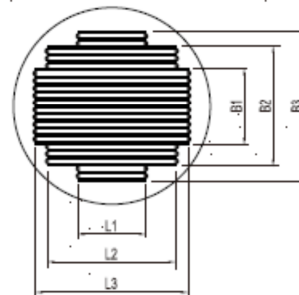
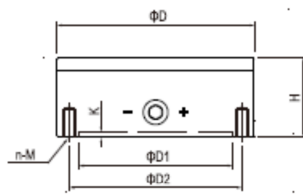
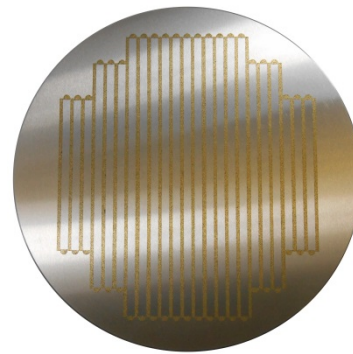
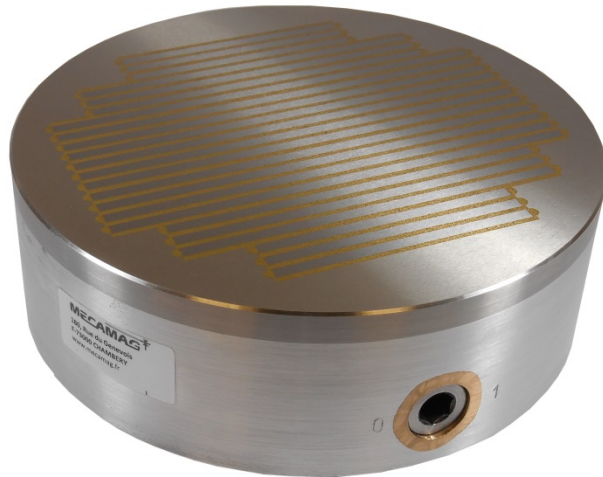


CIRCULAR PERMANENT MAGNETIC CHUCK WITH HIGH CLAMPING FORCE- MRN



Dimensions (mm)														
Part Number	ØD	H	L1	L2	L3	B1	B2	B3	ØD1	ØD2	n	M	K	Weight Kg
2002/06/100	100	65	48	-	-	74	-	-	70	90	4	6	4	2,2
2002/06/125	125	65	54	88	-	67	98	-	95	110	4	8	4	3,4
2002/06/160	160	65	54	104	124	62	98	122	125	140	4	10	4	5,6
2002/06/180	180	65	64	104	124	62	98	134	125	160	4	10	4	7,1
2002/06/200	200	65	74	104	134	73	110	158	125	180	4	10	4	8,7

Use : Clamping of workpieces that are particularly difficult to clamp, such as ferritic and hard metals containing cobalt as well as very small workpieces.

Features :

- Aluminium housing / tool steel pole plate.
- Very high clamping force thanks to neodymium-iron-boron magnets.
- High precision and low remaining magnetism.
- Pole pitch : 6 mm
- Magnetic field height : 4mm
- Pole plate max wear : 3 mm
- Clamping force up to 180 N/cm²